



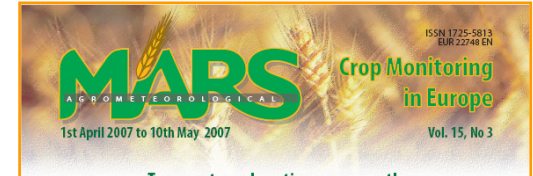
Food security monitoring and crop forecasting and their impact on sustainability of food procurement and delivery

Who we are:

European Commission scientific service,
to provide scientific and technical support to other EU services for
the definition, implementation and monitoring of Community policies.

Why a joint research centre ?

to serve the common interest of the Member States (27),
while being independent of special interests, whether private
or national.

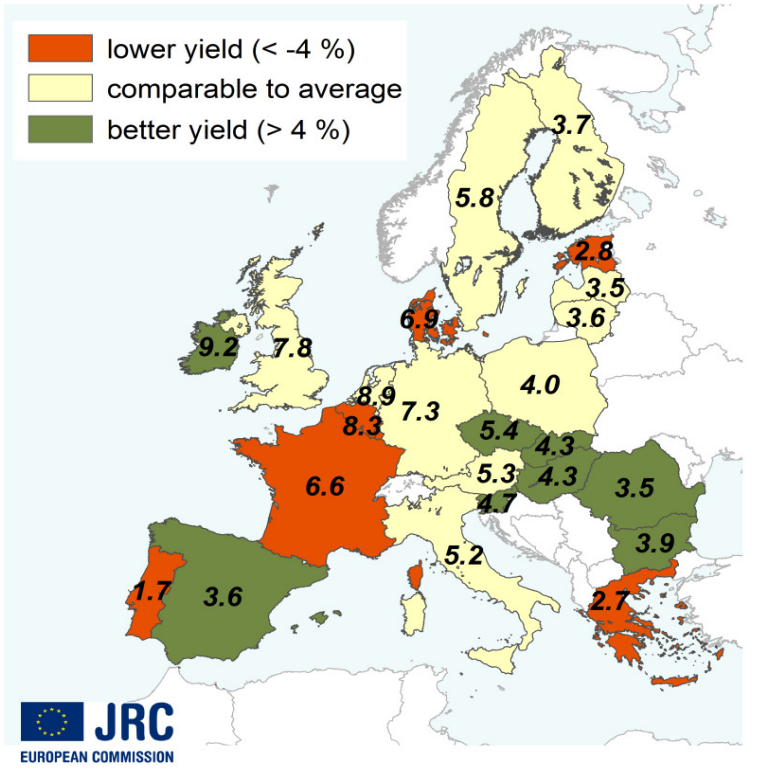


Soft wheat - yield forecast 2011

Actual yield versus average yield 2006- 2010

Yield figures 2011 are expressed in t/ha and rounded to 100 kg

- lower yield (< -4 %)
- comparable to average
- better yield (> 4 %)

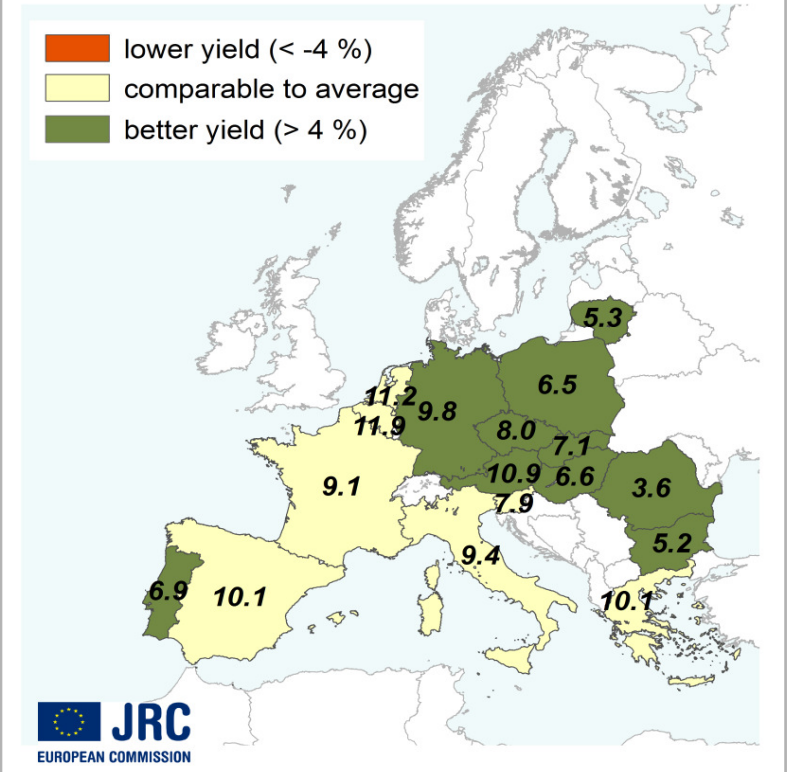


Grain maize - yield forecast 2011

Actual yield versus average yield 2006- 2010

Yield figures 2011 are expressed in t/ha and rounded to 100 kg

- lower yield (< -4 %)
- comparable to average
- better yield (> 4 %)



Overview

1 dry conditions
t conditions were
dist more favour-
ern and southern
late frosts in May

transpiration

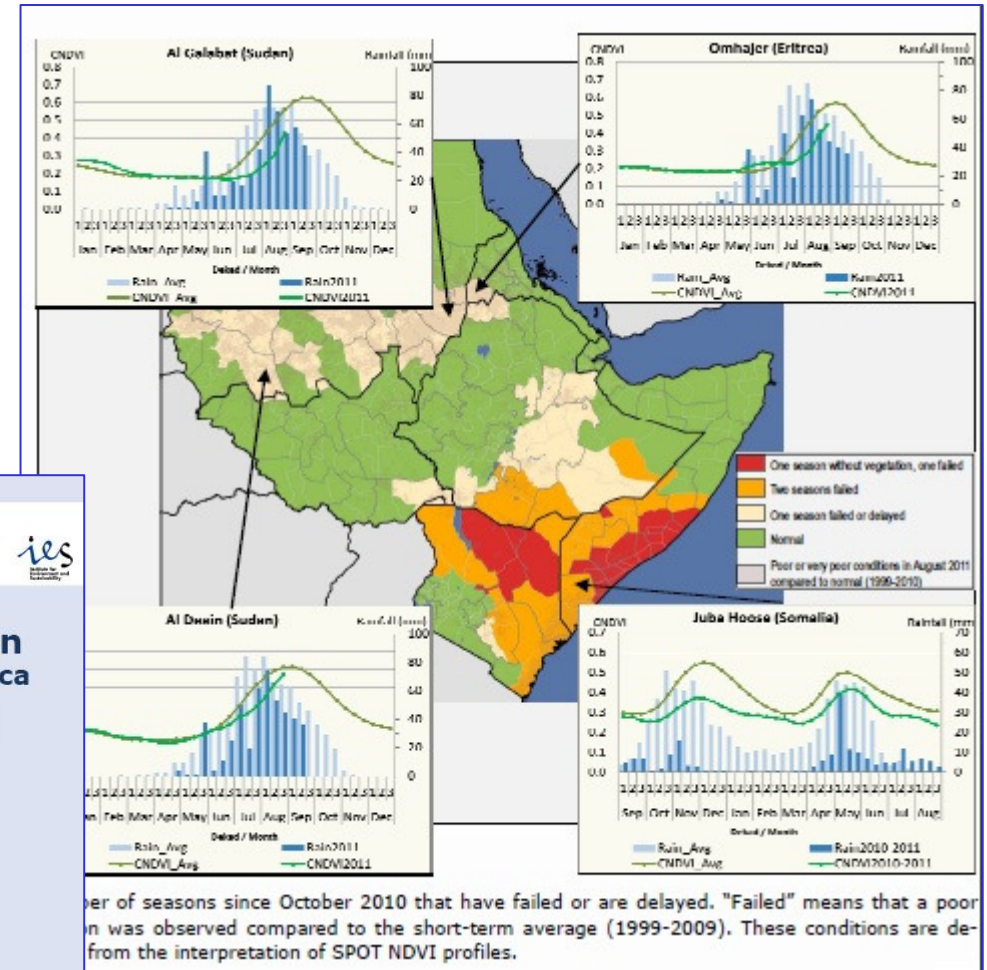
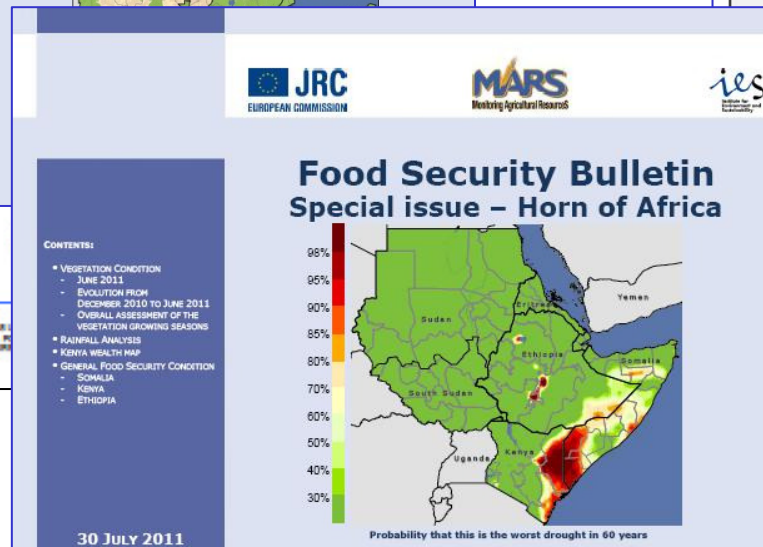
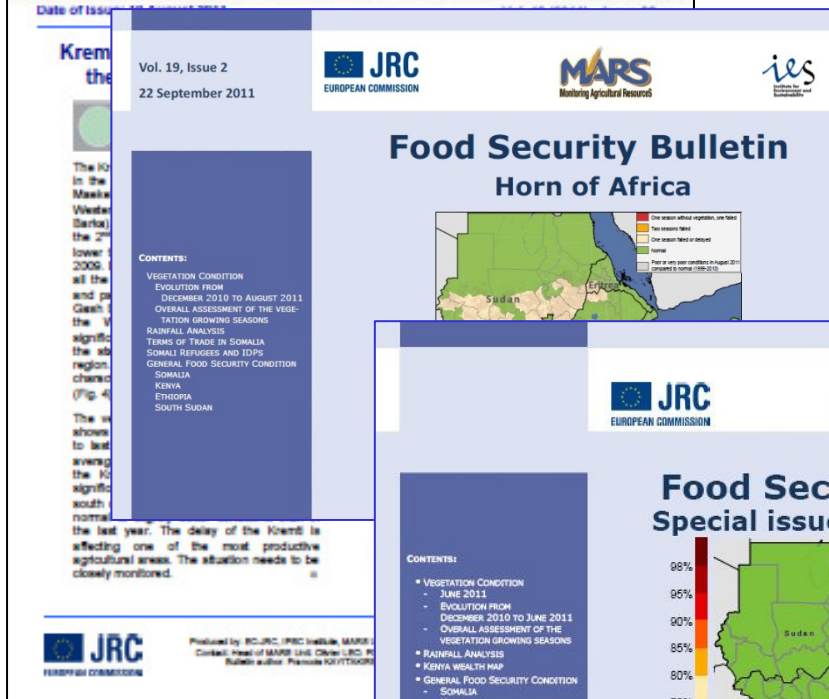
erl. Warmer-than-
nly in the central

spring started with
e, April was one of
central and north-
western Germany,
restem Turkey, the
since 1975 (on av-
as 4-4.5°C above
Poland, the Czech
such as these have

1
1
2
3
3
12
13
14
15-19
20

HumLog2012, Hamburg, 22 March 2012

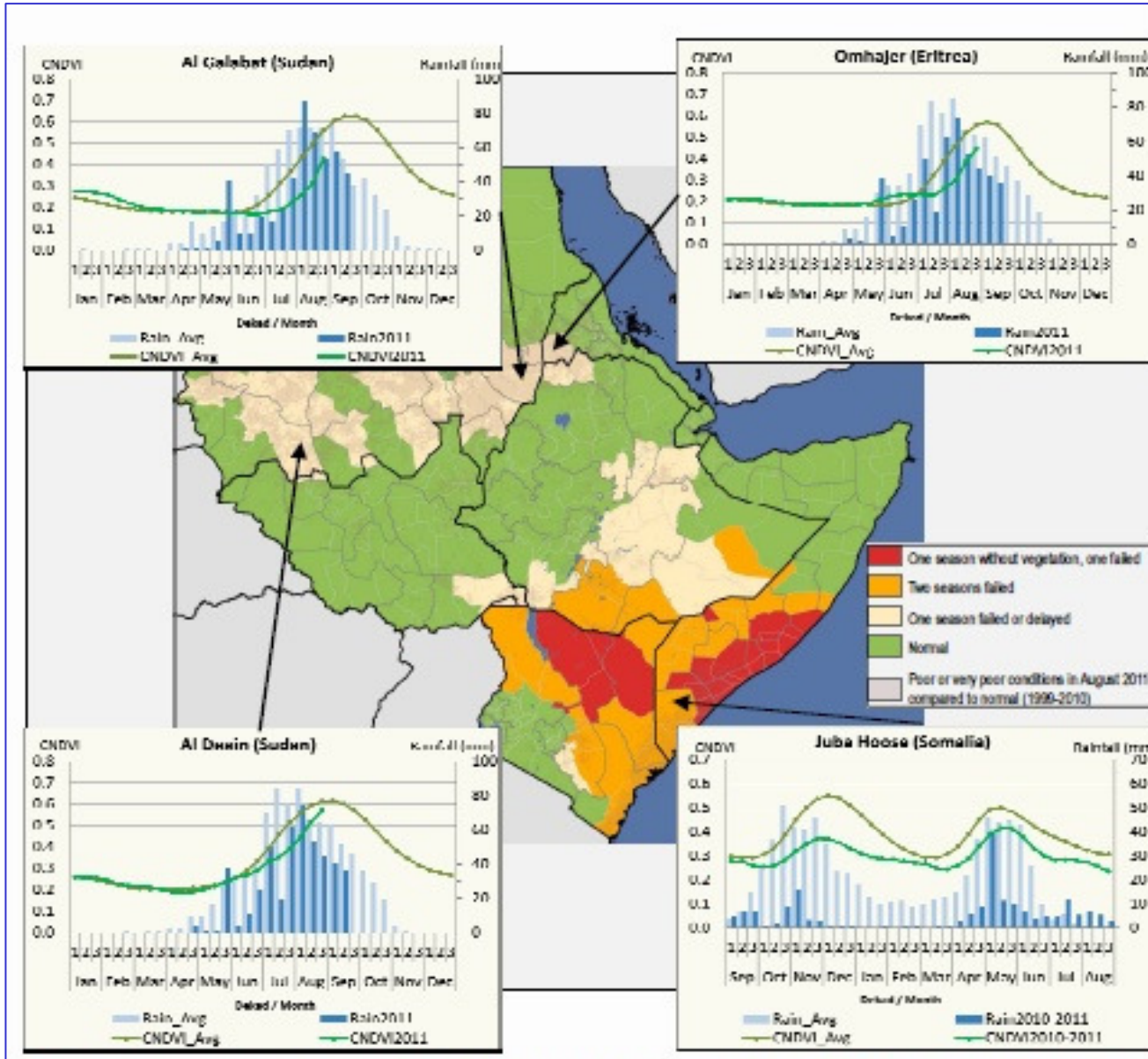
JRC issues early warning bulletins, with a focus on the Horn of Africa, the Sahel and North Korea



number of seasons since October 2010 that have failed or are delayed. "Failed" means that a poor condition was observed compared to the short-term average (1999-2009). These conditions are derived from the interpretation of SPOT NDVI profiles.

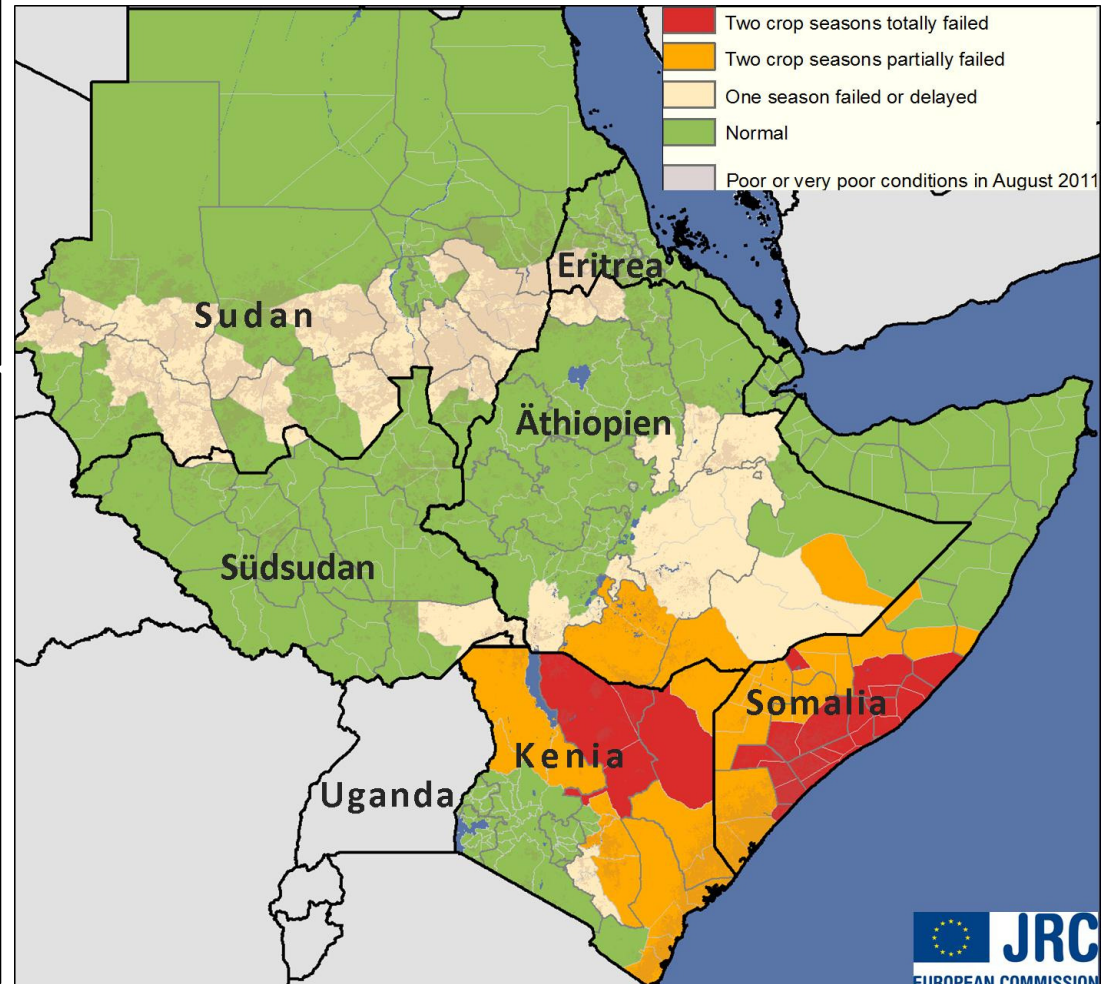
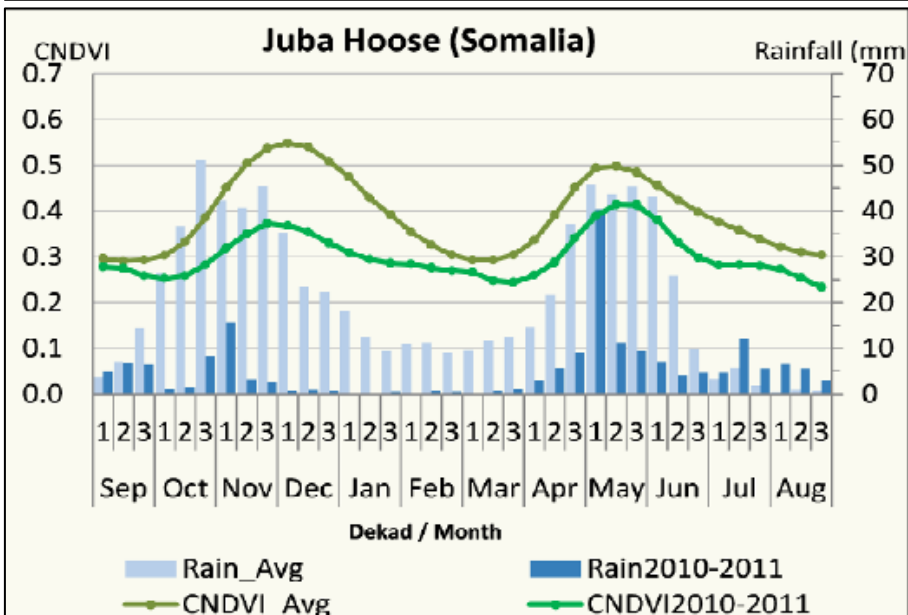
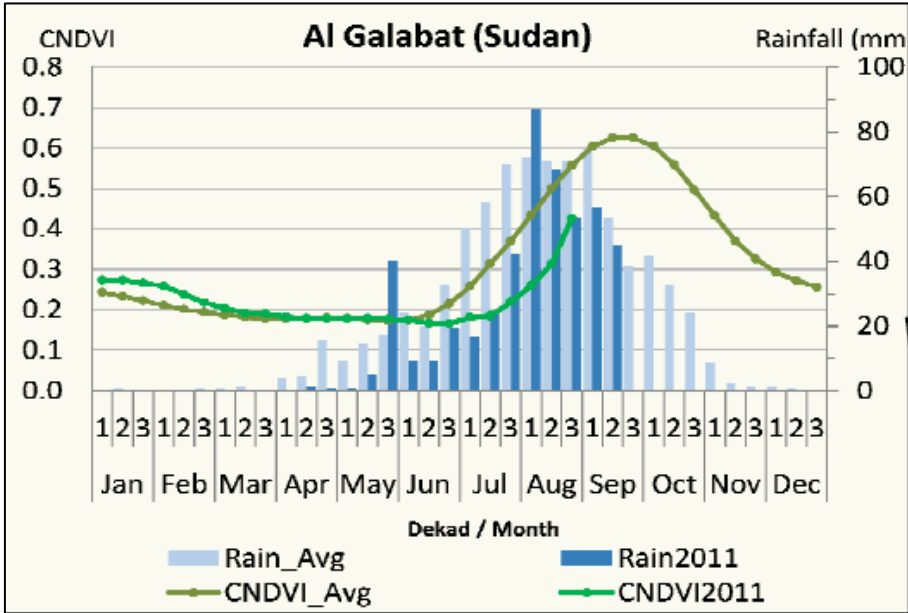
HumLog2012, Hamburg, 22 March 2012

Horn of Africa, crop season 2010 - 2011



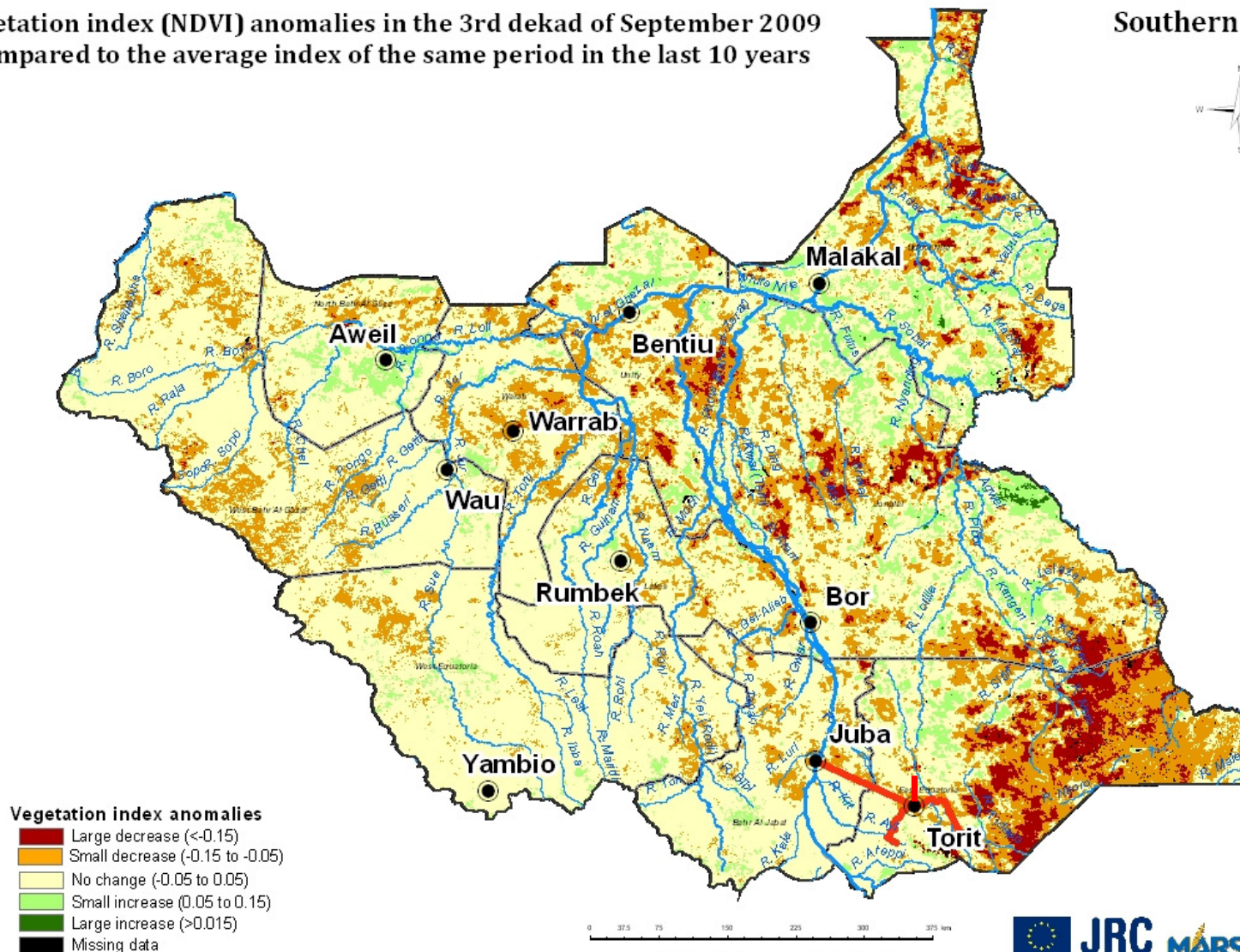
HumLog2012, Hamburg, 22 March 2012

Horn of Africa, crop season 2010 - 2011



Vegetation index (NDVI) anomalies in the 3rd dekad of September 2009 compared to the average index of the same period in the last 10 years

Southern Sudan



Neither the European Commission nor any person acting on behalf of the Commission is responsible for the use which might be made of the publication.



Thank you for your attention!

HumLog2012, Hamburg, 22 March 2012

Water balance model, based on
FAO AgrometShell,
5 main crops
Weather variables from ECMWF

Indicator combining the WSI with
the progress index

Temporal evolution of the WSI

